



# BV5000

## 3D Mechanical Scanning Sonar

BlueView's BV5000-1350 3D mechanical scanning sonar creates high resolution imagery of underwater areas, structures, and objects. With the touch of a button, the 3D mechanical scanning sonar creates 3D point clouds of an underwater scene with minimal training required. These compact, lightweight units are easily deployed on a tripod or an ROV. The scanning sonar head and integrated mechanical pan and tilt mechanism generate both sector scans and spherical scan data. For the first time, get 3D laser-like scanning capabilities underwater, even in low and zero visibility conditions and seamless integration with traditional laser scan imagery.



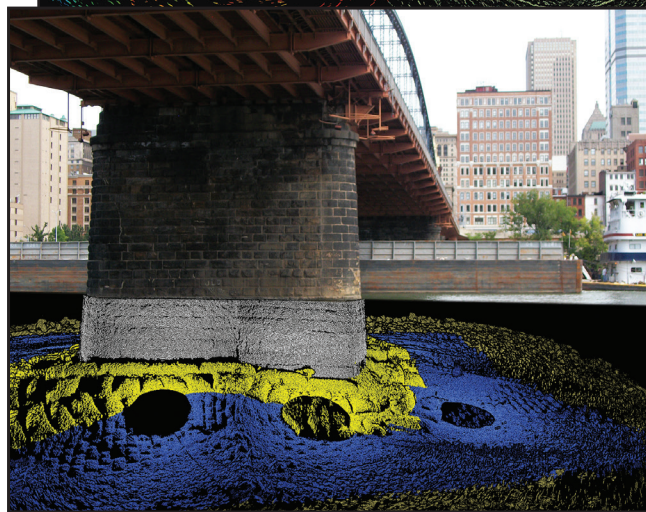
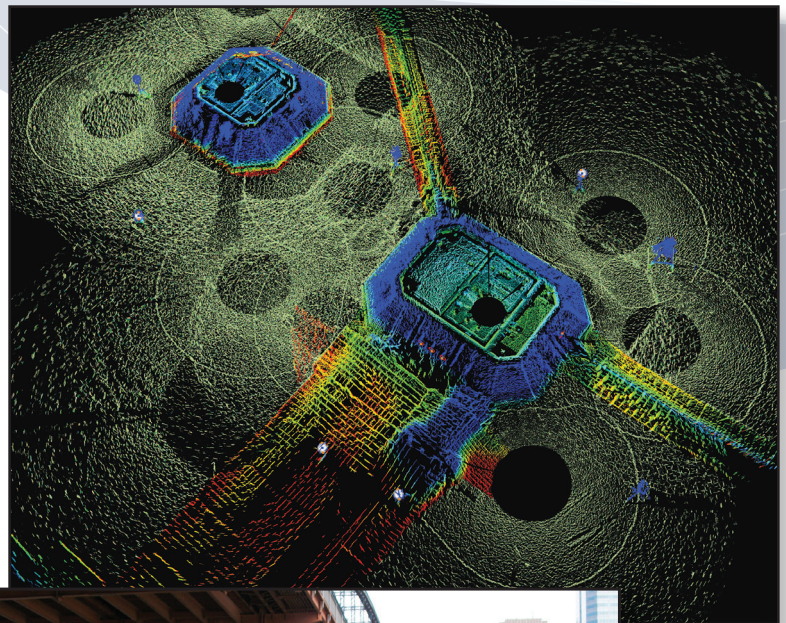
### Applications:

- 3D site survey
- 3D structure inspection
- Rig decommissioning
- Bridge inspections
- Underwater metrology

### PRODUCT FEATURES & BENEFITS

#### Features:

- Easy, one-touch scan function
- 3D mosaic imaging without position info
- Easily combined with laser scan imagery
- Compact size fits into tight spaces
- Operates in low and zero visibility conditions
- Standard Ethernet/RS485 interface
- Easy Windows-based software
- Leica Cyclone data compatible
- Sector and spherical scans



# BV5000 3D Mechanical Scanning Sonar



## TECHNICAL SPECIFICATIONS BV5000-1350

<b>Sonar &amp; Software</b>	Sector/Spherical Scan Area (°)	45 - 360
	Sonar Field of View (°)	42 x 1
	Update Rate (Hz)	Up to 40
	Frequency (MHz)	1.35
	Maximum Range	30 m (98 ft.)
	Optimum Range	1 - 20 m (3.2 - 65 ft.)
	Number of Beams	256
	Beam Width (°)	1 x 1
	Beam Spacing (°)	0.18
	Time Resolution	0.015 m (0.59 in.)
	Data Output Format	.son, and .xyz files
	<b>Mechanical</b>	Size (L x W x H in inches)
Weight in Air/Water (lbs.)		21.7/8.2
Depth Rating		1000 m (3,280 ft.) / 4,000 m (13,123 ft.)
Coms (Sonar/Pan & Tilt)		Ethernet/RS485
Power Consumption (W)		45 max.
Power Requirement (V DC)		20 - 29

## STANDARD EQUIPMENT AND AVAILABLE OPTION

	Included	Optional
<b>Hardware</b>	MB1350 Sonar	25 ft. Sonar, Pan & Tilt Cable (1 included w/ BV5000 Accessory Kit)
	Pan & Tilt w/ mounting hardware	25ft or 150ft ft. Sonar, Pan & Tilt Cable Assembly
	Sonar, Pan & Tilt junction box	(needed for tripod and fixed mount systems)
	Shipping case	4 ft Sonar whip, 2 ft pan and tilt whip kit w/ Wiring Diagram
	Accessory kit*	(needed for ROV mount systems)
<b>Software</b>	RS485 to USB drivers	QuickStitch
	ProScan 1.3 (or current)	
<b>Manuals</b>	BV5000 User Handbook	Quick Start Guide
<b>Training</b>		On-Site "Getting Started" hardware/Software (per day)
<b>Warranty</b>	1 Year	Extended Warranty (per year)

\* Accessory kit includes: Retract-A-Bit Hex Driver; 7 ft. Cat 5 Ethernet Cable; 25 ft. Sonar/Pan & Tilt Cable; 2 m USB Cable; 15A US Power Cord; RS485 to USB driver CD; ProScan 1.3 (or current).  
 \*\*All beamwidths are nominal values.



**TELEDYNE MARINE**  
 BLUEVIEW  
 Everywheryoulook™

[www.teledynemarine.com/blueview](http://www.teledynemarine.com/blueview)

Tel. +45 4738 0022 (Europe) • Tel: +1 805 964 6260 (USA)

Email: [blueview@teledyne.com](mailto:blueview@teledyne.com)