

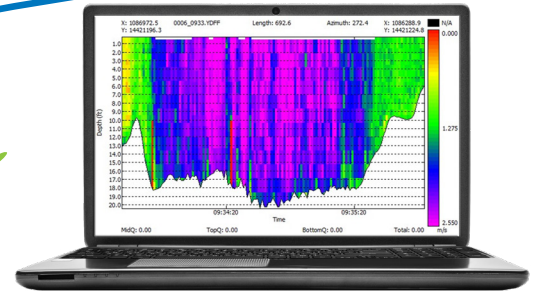


HYPACK
a xylem brand



HYPACK® WATER QUALITY

SIMPLIFYING DATA COLLECTION OF WATER CHARACTERISTICS



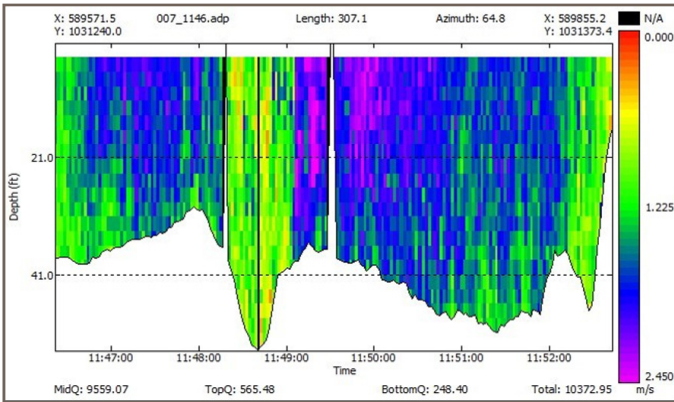
Meeting the global need for improved environmental monitoring requires a targeted approach where data from many different sensors can be viewed and analyzed together. The HYPACK® Water Quality Mapping software supports the study of a body of water by employing environmental sensors as well as Acoustic Doppler Current Profilers (ADCPs). The Water Quality Mapping software works with several Autonomous Surface Vehicles to expand on the types of locations measurements can be obtained.

Due to the various methods and procedures involved in environmental surveys, the user may have data in one system that they need to compare with data from another system. By facilitating communication between these systems, the user's water quality awareness is greatly improved as well. This integration allows all involved brands to support Xylem's mission to test, analyze, and treat water in a way that encompasses each individual device provides.

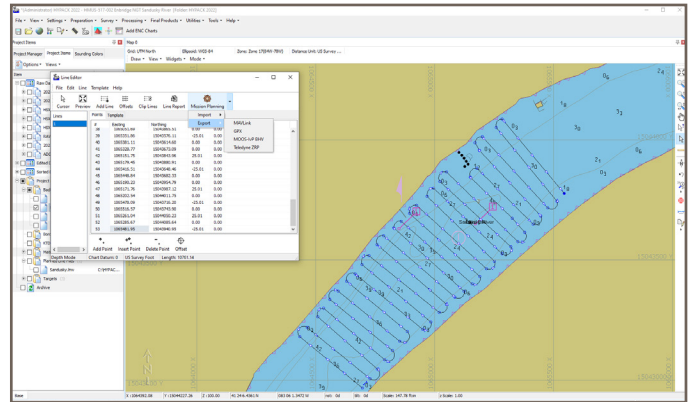
BENEFITS

- Simultaneous data collection from up to 32 sensor parameters
- Acoustic Doppler Current Profiler data collection and processing
- Generate and export plots and final products to help analyze data
- Plan a survey and analyze the data from the same software to reduce the time spent managing data

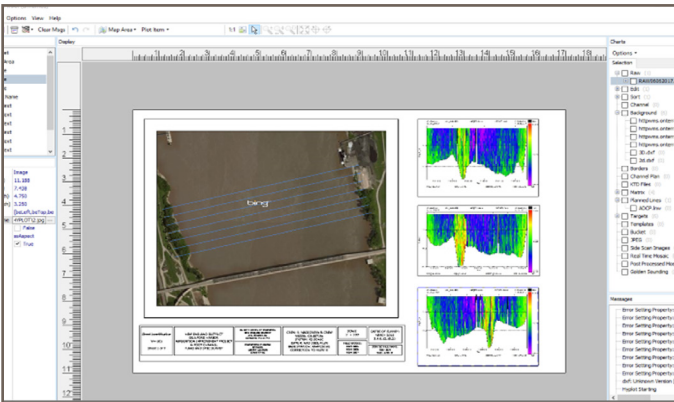




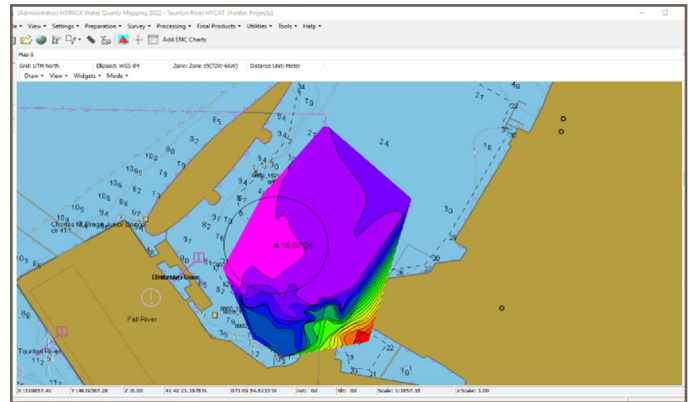
Discharge and velocity measurement for Acoustic Doppler Profilers.



Mission planning for Autonomous Surface and Underwater Vehicles.



Create final products with HYPLOT that show data from multiple views.



Generate contour maps of environmental parameters such as this salinity plot.

HYPACK® WATER QUALITY MAPPING Specifications

Survey Planning	HYPACK® Shell, Web Map Server, Line Planning, Autonomous Mission Planning
Geodesy	Support for over 100 pre-defined grids including UTM, State Plane, and many country-specific grids. Geodesy supports EPSG code search.
Position Support	GPS (NMEA-0183), RTK Support (NMEA, POSMV, SBG, Vector NAV)
Autonomous Vehicles	i3XO, HYCAT, Seafloor Systems, ArQPOD, MAVLink Support
Acoustic Doppler Current Profilers	RDI, Rowe and Nortek
Environmental Sensors	YSI 6600, YSI EXO Sonde, YSI Turbidity Monitor, WindObserver Anemometer, Multiple Water Level Gauges