



HYPACK
a xylem brand

HYPACK® ECHO

A SIMPLIFIED SOLUTION FOR SINGLE BEAM BATHYMETRIC AND HYDROGRAPHIC SURVEYING



**Surveying
Made Simple**

HYPACK® ECHO is our software package for bathymetric and hydrographic surveying, which use single beam echosounder (SBES) technologies. HYPACK® ECHO is a good choice for any industry that requires an SBES survey, and is especially suitable for support mining operators or military surveyors in need of professional-grade software with a simplified workflow. HYPACK® ECHO is built on the same core as HYPACK®, which ensures ECHO can be maintained and continuously improved for the future.

FEATURES

- Survey planning and real-time navigation
- Full positioning support including RTK and Differential GPS
- Support for popular AUV interfaces (MAVLink, SeaRobotics)
- Background charts (ENC and Web Map support)
- View and analyze single beam data, including echogram support
- Final Products include plotting and exporting to ASCII XYZ and DXF

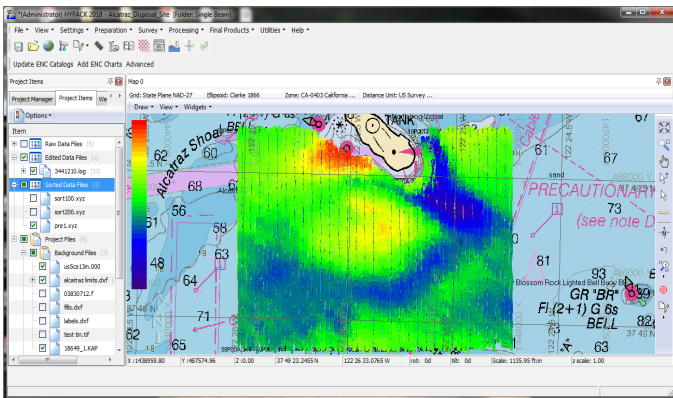
BENEFITS

- Simple and focused solution
- The software is designed to display only the tools applicable to SBES surveying
- Support provided by our experienced and knowledgeable support team
- Upgradeable to our full suite of tools, HYPACK® MAX

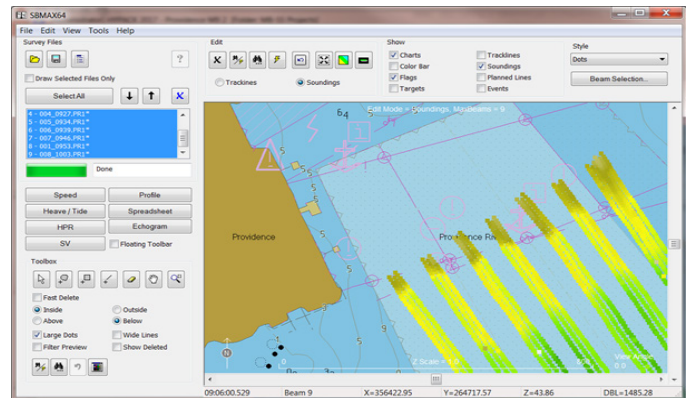


HYPACK® ECHO EDITOR

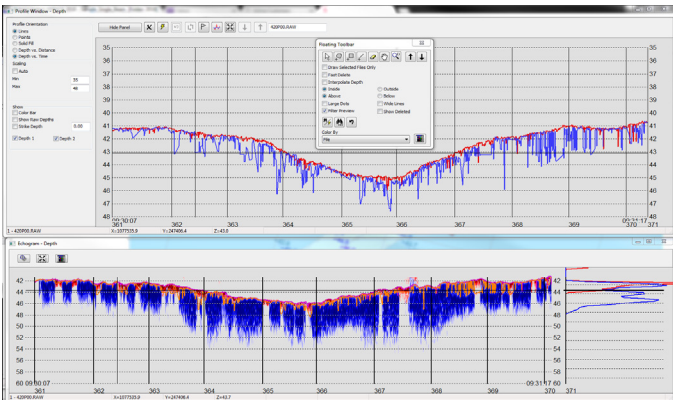
Powerful and intuitive software for single beam echosounder data review, cleaning and visualization.



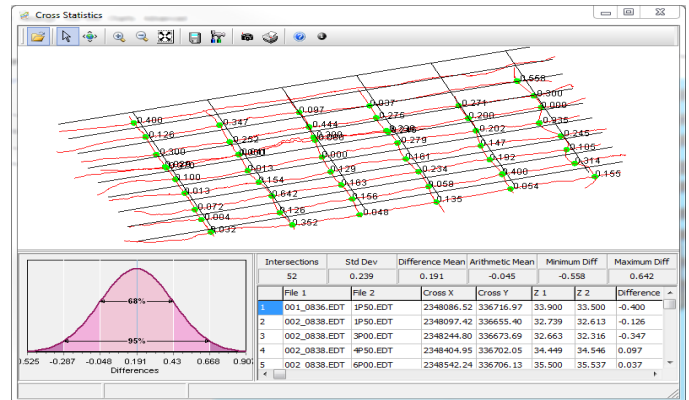
Colored sounding on ENC background chart.



Single beam data editing, sorting, and DXF Contours.



Single beam bathymetric profile and echogram.



Cross-statistics module for performance test.

HYPACK® ECHO Specifications

Survey Planning	HYPACK® Shell, Web Map Server, Line Creation, Autonomous Mission Planning
Geodesy	Support for UTM, State Plan, Multiple Grids, WGS84, and Other Ellipsoids
Position Support	GPS (NMEA-0183), RTK Support (NMEA, POS MV, SBG, VectorNav)
Motion Support	TSS1 Message
Echosounders Supported	Atlas, CEEDUCER PRO/CEESCOPE, EchoLogger, ELAC MKII HydroStar, HydroBall, Innerspace, Kaijo, Knudsen, Kongsberg, Marimatech, NaviSound, Navitron, Ocean Data Bathy, SonarLite, SonarMite, Teledyne Odom, and any NMEA compatible sonar
Data Processing Engine	HYPACK® Single Beam Editor (SBMAX64) with DXF Contour and XYZ Sort Option
Export Files	XYZ, HS2x, EDT, DXF, DWG, DGN, KMZ, SHP
Final Products	Sort, Export to XYZ, Plotting, DXF Contours



HYPACK
a xylem brand

HYPACK
56 Bradley Street
Middletown, CT 06457 USA

1-860-635-1500
sales@hypack.com
HYPACK.com