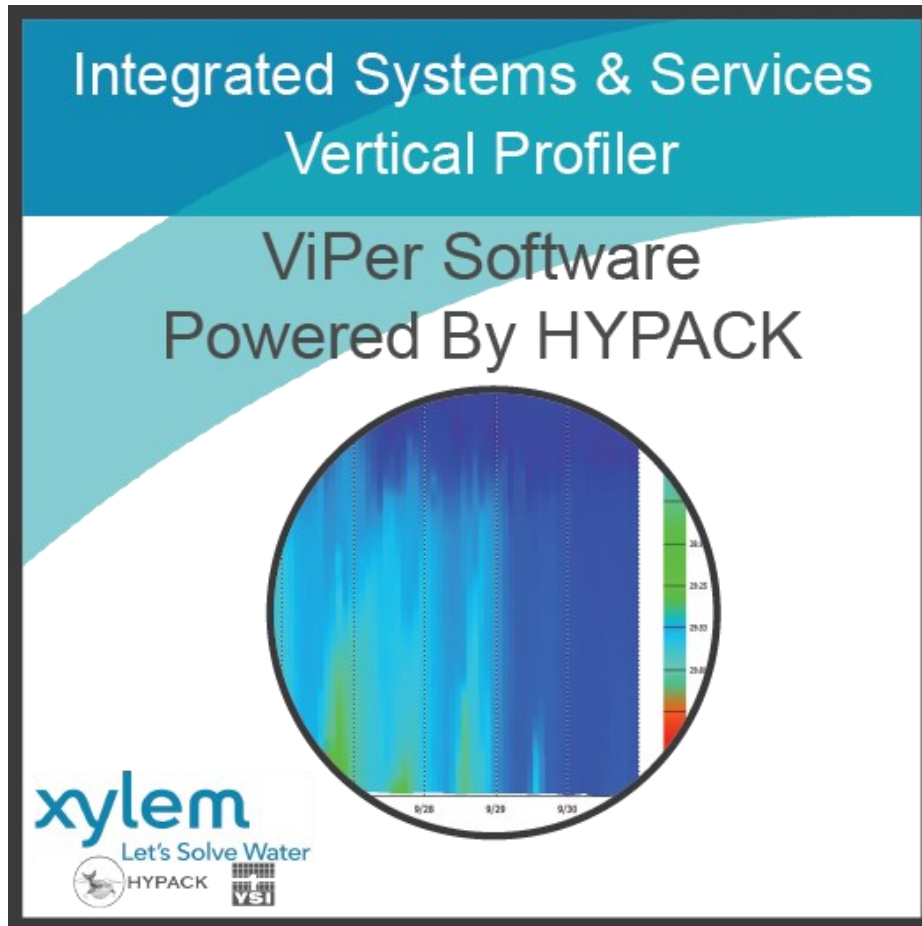


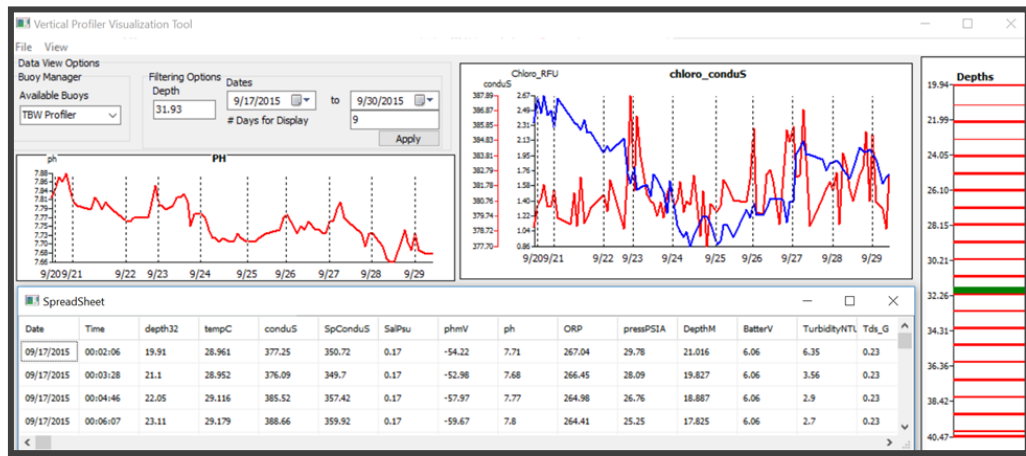
ViPer Software

Software for Visualization of Environmental Data

ViPer enables you to visualize your environmental sensor data. Choose from over 50 sensor variables and view them in profile, gradient or spreadsheet view.



- Show data in single-day or multiple-day displays.
- Real-time updates insure you always view the latest data. No need to manually update data files to display the latest data.
- Send screen captures of your displays in jpeg format to your web page for online viewing by a wider audience. 1.) File export to jpg 2.) With the HTML output
- Each buoy system stores up to 25 sensor variables to a DAT file, which ViPer queries to generate your displays.

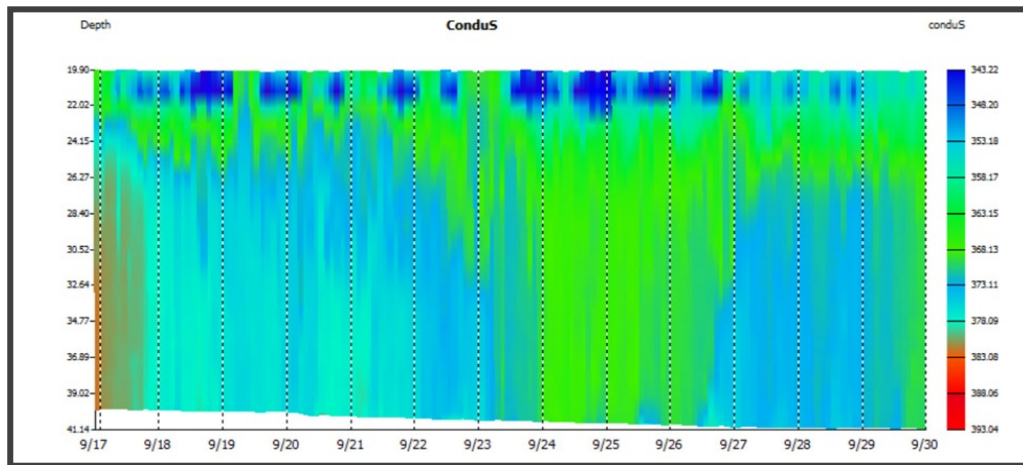


Data display with two profiles and spreadsheet output.

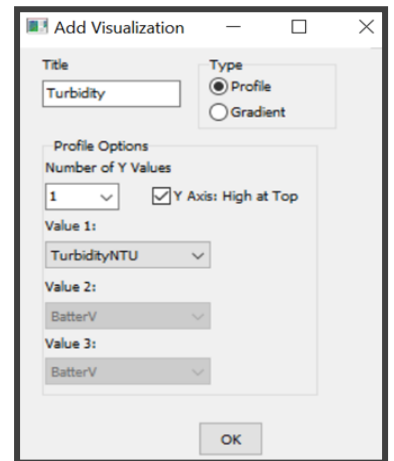
Sensor parameter codes:

Temp	C	1	Cl	mg/L	112
Temp	F	2	Cl	mV	145
Temp	F	3	TSS	mg/L	100
Cond	mS/cm	4	TSS	mg/L	101
Cond	µS/cm	5	Chlorophyll	µg/L	103
SpCond	µS/cm	6	Chlorophyll	µg/L	104
SpCond	µS/cm	7	ODO	% sat	211
Sal	psu	12	ODO	mg/L	212
pH	mV	17	ODO	% local	214
ORP	mV	18	BGA PC	RFU	216
ORP	mV	19	BGA PE	RFU	218
Press	psia	20	Turbidity	FNJ	223
Press	psig	21	Turbidity	RAV	224
Depth	meters	22	BGA PC	RFU	225
Depth	feet	23	BGA PE	RFU	226
BatterV	volts	28	IDOM	µg/L	227
Turbidity	NTU	37	IDOM	µg/L	228
NH ₄	N mg/L	47	Wiper Position	volts	229
NH ₄	N mg/L	48	Cable Power	volts	230
Date	DD/MM/YY	51	BGA PC	Row	231
Date	MM/DD/YY	52	BGA PE	Row	232
Date	YY/MM/DD	53	IDOM	Row	233
Time	HH:MM:SS	54	Chlorophyll	Row	234
NO ₂	N mg/L	101	nLF Cond	mS/cm	237
NO ₃	N mg/L	106	nLF Cond	µS/cm	238
NH ₄	N mV	108	Wiper Peak Current	mA	239

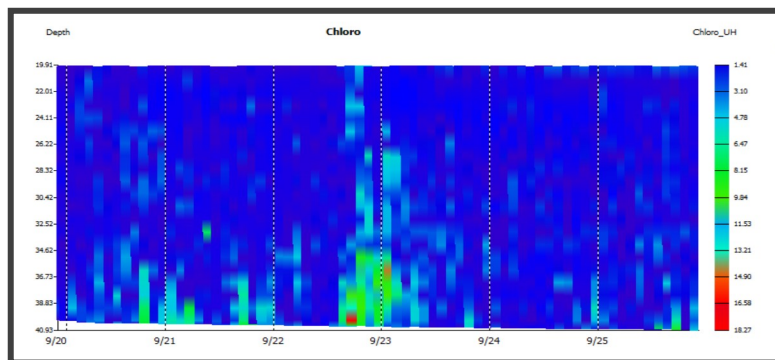
List of available sensor data.



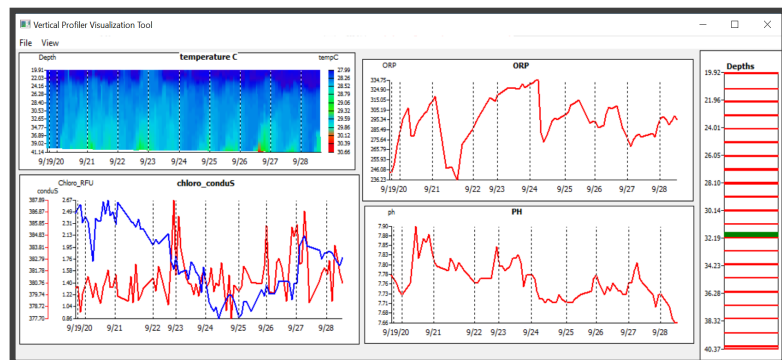
Data selection showing 2 weeks of data in a gradient display.



Configure graphical displays in gradient or profile view.



Sensor data, gradient view of 6 days.



Customize your viewing with multiple windows. For each window, choose the parameter and display type (profile or gradient.)